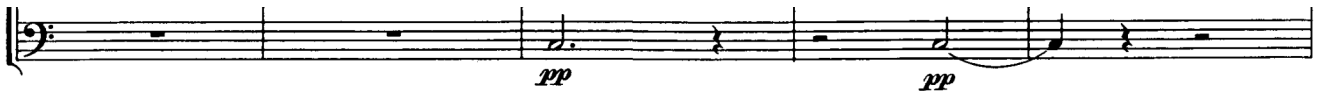
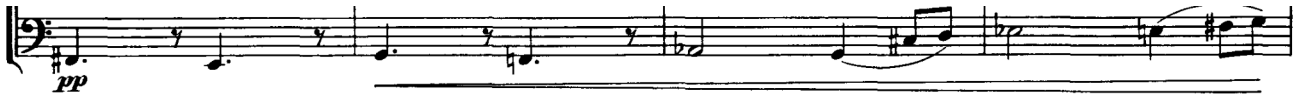




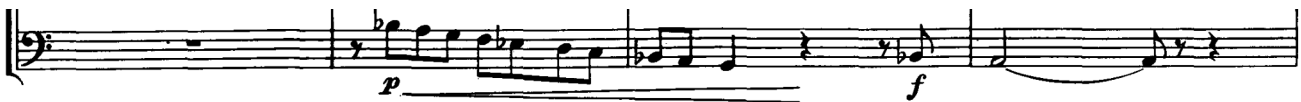
I

Kb.



II

Kb.



Schnell





A musical score for contrabass, consisting of six staves of music. The notation includes various dynamics such as *f*, *p*, and *mf*, and includes first and second endings. The music is written in bass clef with a key signature of one sharp (F#).

Staff 1: *f* dynamics, first ending marked with a '7'.

Staff 2: *p* and *mf* dynamics, second ending marked with a '2'.

Staff 3: *f* dynamics.

Staff 4: *f* dynamics.

Staff 5: *p* and *f* dynamics.

Staff 6: *mf* and *p* dynamics.