

Violoncello

Symphonie Nr. 7

A-dur • A major

op. 92

Ludwig van Beethoven

Poco sostenuto $\text{♩} = 69$

Violoncello part of Beethoven's Symphony No. 7, measures 1-52. The score is written in bass clef with a key signature of two sharps (F# and C#). The tempo is Poco sostenuto with a quarter note equal to 69 beats per minute. The music features a variety of dynamics and articulations.

Measures 1-9: *f*, *f*, *f*, *f*, *p*, *dimin.*

Measure 10: *pp*, *cresc.*, *ff*

Measures 11-16: *pp*

Measures 17-20: *pp*

Measures 21-30: *dimin.*, *p*, *pp*

Measures 31-35: *cresc.*, *ff*

Measures 36-39: *ff*

Measures 40-44: *ff*, *dimin.*, *p*, *pizz.*

Measures 45-51: *arco*, *pp*, *cresc.*

Measures 52: *B*, *ffp*, *p*, *fp*, *p*, *5*

Vivace ♩. = 104

63 **3**

p

73

sfp *sfp*

81

f > p *f* *sf* *sf* *sf* *sf* *sf*

88 **1-6** **2** **3** **4** **5**

ff

94 **6**

p

101 *cresc.* *staccato*

107 *ff* *p*

114 *cresc.* *f* *p* *cresc.* *f*

123 *sf* *p*

131 **1** **D** *dolce* *f*

138 *dimin.* *p* *pp* *pp* *pp*

146
cresc. poco a poco

151
ff *pp*

157
cresc. *ff* *pp* *cresc.* *ff*

165
sf *sf* *sf* *ff*

172
2 G.P. *ff* 2 3 G.P.

184
pp

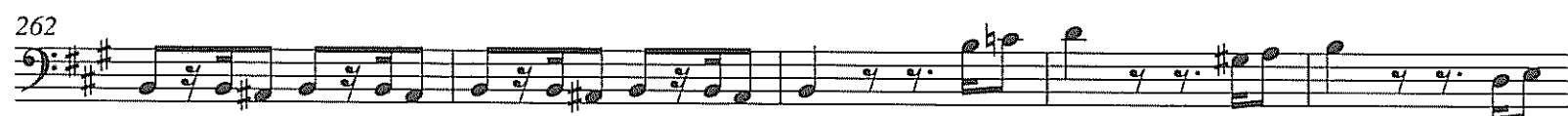
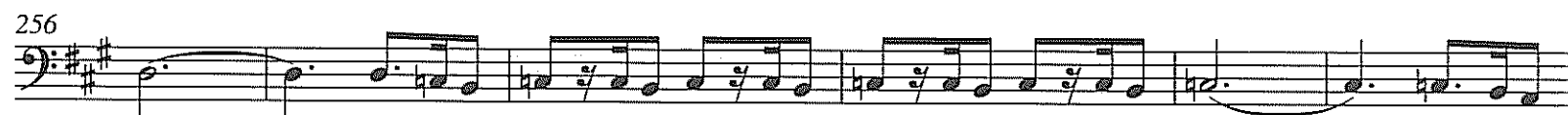
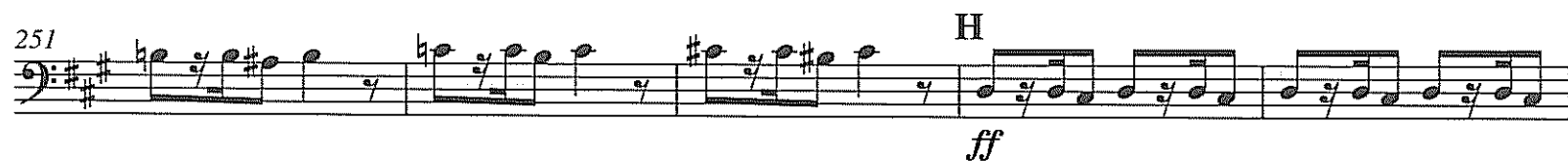
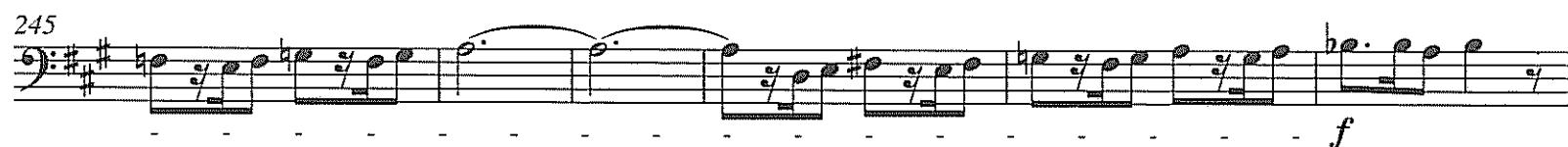
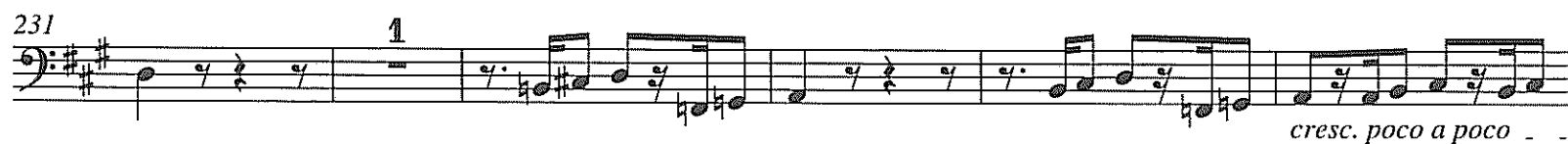
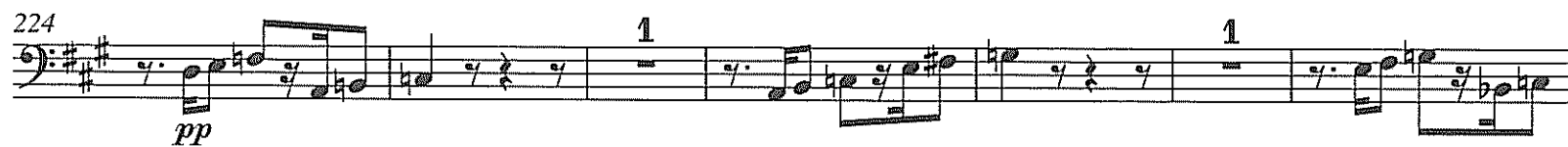
190
1-6 *cresc.*

196
2 3 4 5 6

201
f *ff* 1

207
1

214
G *ff* *sf* *sf* 4



277 **I**

ff

282

287

292

297 *pizz.* *p* *arco* 1-6 2 3 *p*

304 4 5 6 *pp* *pp*

316 *cresc.*

323 **K** 1-5 2 3 4 *ff* *p*

330 5 *cresc.* *f*

337 *sf* *p* 1

344 *dolce* *f* *L*

350 *dimin.* *p* *pp* *pp* 1

357 1 *cresc. poco a poco*

362 *ff*

367 *pp* *cresc.* *ff*

373 *M* *pp* *cresc.* *ff* *ff* *sf*

380 *sf* *ff*

386 2 1 *G.P.* *p* *G.P.* *pp*

394 *sempre pp*

399 N 1-10 2

405 3 4 5 *cresc.*

411 6 7 8

417 9 10

423 *ff*

429

435

440 *ff*

445

Allegretto ♩ = 76

Violoncelli I *mi*

Violoncelli II *di*

2 *ten.* *p*

14

pp

27 **A**

p

37

pp

46 **B**

cresc. poco a poco

56

66 *f* più forte *ff* 3 *ff*

76 3 3 3 3

84 *dimin.* *dimin.*

92 *sempre dimin.* *p* 2 pizz. 2 pizz.

102 D 1-12 2 3 4 5 6 7 8 9 10 11

113 12 1-7 2 3 4 5 6 7 *cresc.*

124 *dimin.* *p* *cresc.*

135 1-6 2 3 4 5 6 2 *dimin.* *p* *cresc.*

146 arco *f* 3 *ff* 1 *E* pizz. *p*

157

168 *cresc.*

180 *F* 5 Viol. II arco *ten.* *pianissimo* *dimin.*

195 *sempre pianissimo*

200 *sempre pianissimo* 2

209 *G* *ten.* *cresc.* *ff*

219 2 pizz. *p* 1-18 2 3 4 5

230 6 7 8 9 10 11 12 13 14 15

240 16 17 18 arco *H* *dimin.* *pp* *ff* *p* *ff*

252 1 pizz. *p* *p*

265 2 arco *f* 2

Presto $\text{♩} = 132$

Violoncello score for measures 1-143. The piece is in 3/4 time, marked Presto ($\text{♩} = 132$). The score includes various dynamics, articulations, and a key change at the end.

Measures 1-11: *f*, *p*

Measures 11-22: *cresc.*, *sf*, *sf*, *f*

Measures 22-42: *f*, *sf*, *pp* (Viol. I), *ff*, *pp*, *ff*

Measures 42-60: *ff*, *pp*, *ff*, *pizz.*, *p*

Measures 60-74: *p*, *cresc.*, *arco*

Measures 74-85: *cresc.*, *f*, *ff*

Measures 85-97: *f*, *ff*, *pizz.*, *p*, *arco*, *p*

Measures 97-109: *p*, *cresc.*, *f*, *sf*, *sf*, *sf*, *p*, *cresc.*

Measures 109-122: *cresc.*, *f*, *sf*, *sf*, *sf*, *p*, *cresc.*

Measures 122-133: *ff*, *sf*, *sf*, *sf*

Measures 133-143: *sf*, *sf*, *ff*, *ff*, *p*

Assai meno presto $\text{♩} = 84$

31

Fl. I 181 12 Clar. I, II Ob. I, II

205 *cresc. - - - ff* 1

217 1 *p sempre diminuendo - - - - -*

231 *Presto* *ppp f p*

242 *cresc. - - - sf sf f*

254 *p sempre piano*

266

278 *B* 11 *p* Viol. I

298 8 Viol. I *pp pp*

317 4 *pizz.* *pp pp p*

332 *arco* *cresc. poco a poco - - - - -*

344 *C* *f ff*

355 *pizz.* *p* *arco*

366 *p* *cresc.* - - - *f* *sf* *sf* *sf* *p*

379 *cresc.* - - - *ff*

389 *sf* *Assai meno presto* **31**

401 *sf* *sf* *sf* *sf* *ff* *p*

441 *Fl. I* *12* *Clar. I, II* *Ob. I, II*

465 *cresc.* - - - *ff* **1**

477 *1* *p* *sempre diminuendo* - - -

490 *Presto* *ppp* *f* *p*

501 *cresc.* - - - *sf*

512 *sf* *f* *f* *sf*

522 *Viol. I* **11** *pp* *ff* **8**

Viol. I

549 *pp* *ff* *p* pizz.

565 *cresc.*

576 arco *f* *ff* D

588 pizz. *p* arco

602 *p* *cresc.* *f* *sf* *sf* *sf* *p*

616 *cresc.* *ff*

629 *sf* *sf* *sf* *sf* *sf* *sf*

641 Coda *ff* *p* *ff* Assai meno presto Presto

Allegro con brio $\text{♩} = 72$

1 *ff* G.P. *sf* *sf* *sf* *sf* *sf* *sf* *sf* 1-7 2 3 4 5 6 7 1.

12b 2. 1. 2.

22 *ff* *ff*

33 A

47

BA 9007

208 Vle. *pp* 1 7 *cresc. - ff* F 1 G.P. 1 G.P.

224 1-7 2 3 4 5 6 7 1. 2.

232 *sf* *sf* *sf* *sf* *sf* *sf* *sf* *ff*

241 *ff*

252

264

272 G 1 pizz. *sf* *p* 1

282 arco *f* *f* *f* *f* *p*

295 *f* *f* *f* *f* *p*

308 1 *cresc. poco a poco*

317 H *ff* *sf* *sf* *sf* *sf* *ff* *sf* *sf*

329 *sf* *sf* *sf* *sf* *sf* *sf*

337 *sf* *sf* *sf* 1 G.P. 1 G.P.

346 I

358

370

381 1-10 2 *sempre più forte*

393 3 4 5 6 7 8

404 K 9 10 *ff*

416 *fff*

429 L *sf sf sf sf p cresc.*

441 *fff sf sf sf sf sf*

453 *sf ff sf sf sf ff*