

## Symphonie Nr. 7

A-dur · A major  
op. 92

Ludwig van Beethoven

Poco sostenuto ♩ = 69

Measures 1-8: *f*, *p*, *f*, *p*, *f*, *p*, *f*, *p*

Measure 9: *dimin.*, *pp*

Measures 14-19: *cresc.*, *ff*

Measures 20-25: *dimin.*, *p*, **A**

Measures 26-31: *pp*, **1**

Measures 32-36: *cresc.*, *ff*, *ff*

Measures 37-42: *ff*, *ff*, *dimin.*, *p*

Measures 43-46: *pp*, *cresc.*

Measures 47-51: *ff*, *p*, *fp*, *p*, **B**

Measure 52: **5**

Vivace  $\text{♩} = 104$ 

63 3

*p*

72

*sfp*

79

*sfp* *f > p* *f* *sf* *sf* *sf*

87

*sf* *sf* *ff* 3 *sf*

91

95

99

*p* *cresc.*

103

109 **C**

*ff* *p* *cresc.*

116

*f* *p* *cresc.* *f*

122

*sf*

127

1 **D**

*sf* *p* *dolce* *f*

135 *dimin.* *p*

141 *pp* *pp* *cresc. poco a poco*

148 *ff* **E**

153 *pp* *cresc.* *ff* *pp*

163 *cresc.* *ff*

169 *ff* **2** **G.P.**

177 *ff* **2** **3** **G.P.** *pp*

190

195 *cresc.*

201 **F** *f* *ff* **1**

208 **1**

214 **G** *ff* *sf* *sf* **2**

222 *pp*

228

234 *cresc. poco a poco*

241

249 *f* *ff* *H*

257

264

271 *più forte* 3 3

278 *I* *ff*

282

286

290

294

300 pizz. arco  
p p pp

312 pp cresc.

322 K ff p

329 cresc. f

335 sf p

343 1 dolce f L dimin.

351 p pp pp cresc. poco a poco

360 ff

366 pp cresc. ff pp

375 M cresc. ff

382 ff 2 1 8  
G.P. p G.P.

399 Cor. I Fl. I N 1-10 2 3

406 4 5 6 7

415 8 9 10

423 *ff*

430

437 *ff*

444

Allegretto  $\text{♩} = 76$

2 *ten.*

14 *pp*

25 A *p*

36 *pp*

46 B *cresc. poco a poco*

56

66 *f* più forte *ff*

76

85 *dimin.*

94 *sempre dimin.* *p* *p* *3* *D*

108

122 *cresc.* *dimin.* *p* *cresc.* *dimin.*

137 *p* *cresc.* *f* *ff*

150 *E*<sub>1</sub> *p* *sempre staccato*

159 *sempre piano*

167

175 *cresc.* *dimin.* *F* 6

Viol. II

189 *pp*

195 *sempre pianissimo*

203 *sempre pp* *cresc.*

212 *G ten.* *ff* *3*

225 *p*

238 *dimin.* *pp* *ff* *H* *p*

251 *ff* *p* *1* *pizz.* *piano*

264 *2* *arco* *2* *f*

Presto  $\text{♩} = 132$

*f* *p*

7 *cresc.* *sf*

16 *sf* *f*



25 10

*f sf pp*

41 2 8

*ff pp ff p*

61

71

*cresc.*

81 1 A

*f*

91

*ff p*

103 2

*p cresc. f sf*

115

*sf sf p cresc.*

125 *tr*

*ff tr*

135 1

*sf sf sf sf*

144 1. 2.

*sf ff ff p*

Assai meno presto  $\text{♩} = 84$  31

Fl. I 181 12 Clar. I, II Ob. I, II

205 *cresc.* - - - *ff* 1

215 1 1-12 2 3 *p* *sempre diminuendo*

226 4 5 6 7 8 9 10 11 12 *ppp* *f* **Presto**

238 *p*

246 *cresc.* - - - *sf* *sf* *f*

254 *p* *sempre piano*

262

270

279 B *p*

287 10 2 8 *pp* *pp* *pp*

315

*pp* *p*

325

333

*cresc. poco a poco*

341

*f*

350

*ff* *p*

362

*p* *cresc.* *f*

374

*sf* *p* *cresc.*

383

*ff* *tr*

392

*sf* *tr*

401

*sf* *ff* *p*

Assai meno presto  
31

441 Fl. I 12 Clar. I, II Ob. I, II

465 *cresc.* - - - *ff* 1

475 1 1-12 2 3 4 *p* *sempre diminuendo*

487 5 6 7 8 9 10 11 12 *ppp* *Presto* *f*

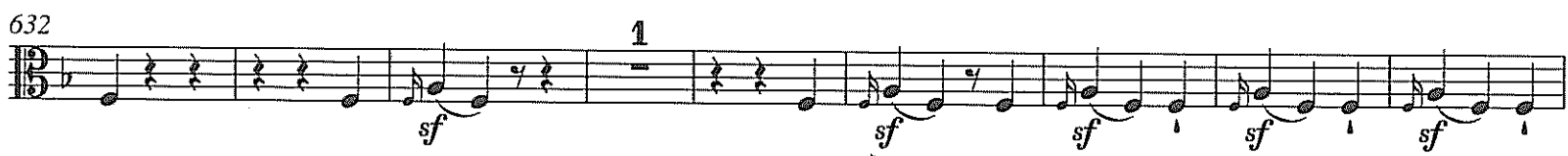
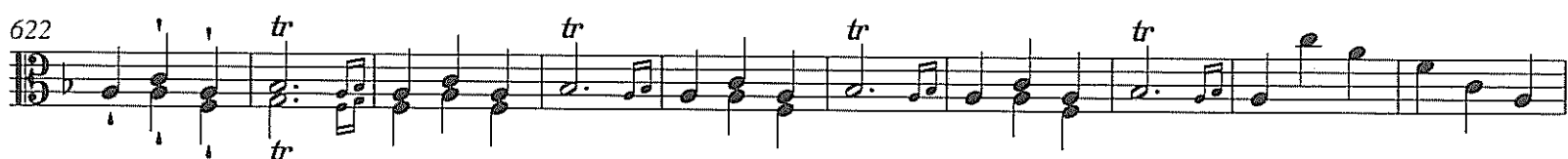
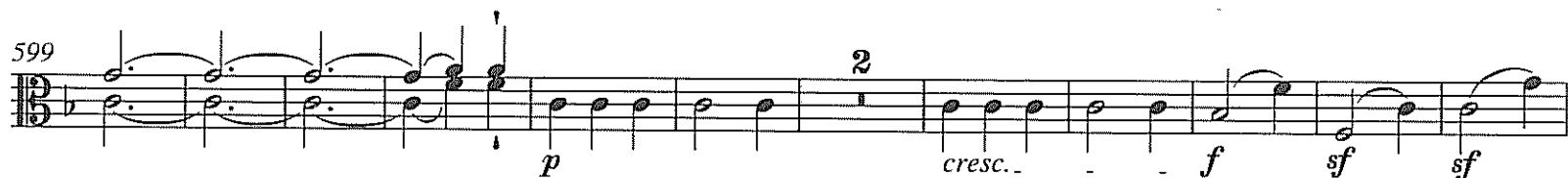
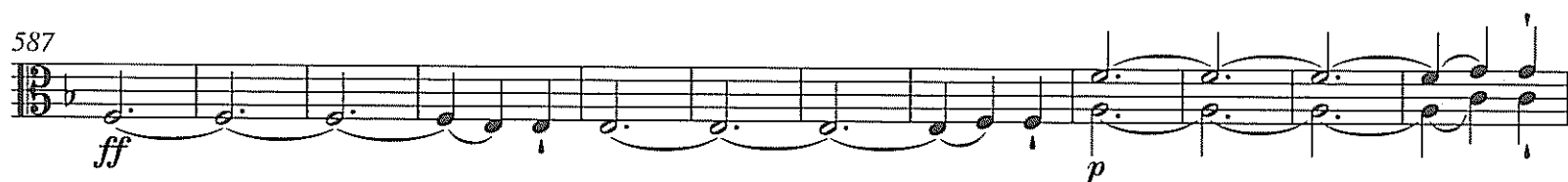
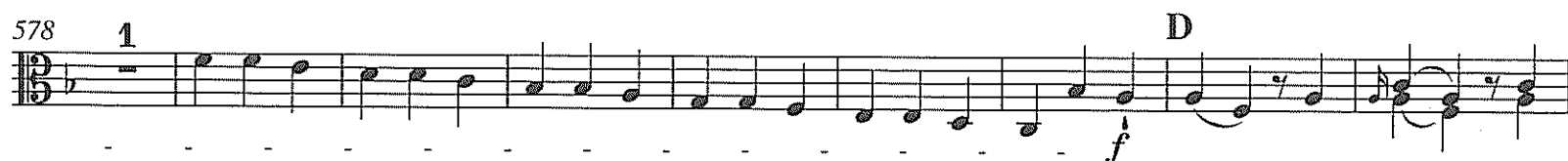
498 *p*

506 *cresc.* - - - *sf* *sf* *f*

515 10 *sf*

533 2 8 *pp* *ff* *pp*

552 *ff* *p*



Allegro con brio  $\text{♩} = 72$ 

1. 2.  $\text{ff}$  G.P.  $\text{sf}$   $\text{sf}$   $\text{sf}$   $\text{sf}$   $\text{sf}$

10.  $\text{sf}$   $\text{sf}$   $\text{sf}$   $\text{sf}$   $\text{sf}$   $\text{sf}$   $\text{sf}$

16.  $\text{sf}$   $\text{sf}$   $\text{sf}$   $\text{sf}$   $\text{sf}$   $\text{sf}$   $\text{sf}$

21.  $\text{ff}$

30.  $\text{ff}$  A 1

39. 1

49. 1-5 2 3 4 5

57.  $f$   $p$

66.  $f$   $p$   $\text{dimin.}$  B  $\text{ten.}$   $p$   $f$   $p$   $f$

76.  $p$   $f$   $p$   $f$   $p$   $p$   $f$   $p$   $f$   $p$   $f$   $p$   $f$   $p$

89. 5 3  $\text{cresc.}$

103. 1 C  $\text{ff}$   $\text{sf}$   $\text{sf}$   $f$   $f$   $f$   $f$   $f$   $f$   $f$   $\text{sf}$

115 *sf* *sf* *sf*

120 1. *sf* *ff* G.P. 1 G.P. 2. *ff* G.P. 1 *ff*  
Dal Segno  $\text{Segno}$

125 1 G.P. *sf* *sf* *sf* *sf* *sf* *sf*

134 *sf* *sf* 1 *sf* 1 *sf*

144 D *sf* *sf* *sf* *sf* *sf* *sf*

151 1. *sf* *sf* *sf* 2. *sf* *sf*

156 1. *sf* *sf* *sf* *sf* 2. *sf*

162

171 1-5 2 3 4 5

180

189 *dimin.*

198 E 1 7 *pp* 1 7 *pp*

219 **F** **1** **1**  
*cresc.* *ff* G.P. G.P. *sf* *sf* *sf*

227 **1.** **2.**  
*sf* *sf* *sf* *sf*

233 *ff*

242 *ff* **1**

250 **1** **1**

258 **1** **1-5** **2** **3**

267 **4** **5** **G**  
*sf* *p*

275 *sf* *p* *dimin.*

285 *p* *f* *f* *f* *f* *p* *f*



296

*f f f p*

307

*cresc. poco a poco*

318

*ff sf sf sf sf sf ff sf sf sf sf*

331

*sf sf sf sf sf*

336

*sf sf sf sf*

341

*G.P. G.P. G.P. G.P. G.P. G.P. G.P. G.P.*

351

*1*

359

*1*

367

*6 2*

379 

387   
*sempre più forte*

399   
*ff*

413   
*sf*

423   
*fff*

432   
*sf* *sf* *sf* *p* *cresc.*

442   
*fff* *sf* *sf* *sf* *sf*

451   
*sf* *sf*

457   
*ff* *sf* *sf* *sf* *ff*