

LUDWIG VAN BEETHOVEN

Symphonie Nr. 7 in A-dur
Symphony No. 7 in A major

op. 92

Urtext
Herausgegeben von / Edited by
Jonathan Del Mar

Flauto I



Bärenreiter Kassel · Basel · London · New York · Praha
BA 9007

Symphonie Nr. 7

A-dur · A major

op. 92

Ludwig van Beethoven

Poco sostenuto $\text{♩} = 69$

Measures 1-56 of the first movement, *Poco sostenuto*. The tempo is marked $\text{♩} = 69$. The key signature is A major (three sharps). The score includes the following dynamics and markings:

- Measures 1-3: *f* (forte)
- Measure 4: *f* (forte)
- Measure 5: *f* (forte)
- Measure 6: *p* (piano)
- Measure 7: *fp* (fortissimo piano)
- Measures 8-10: *dimin. - pp* (diminuendo to pianissimo)
- Measure 11: *cresc. - ff* (crescendo to fortissimo)
- Measure 22: *dimin. - p* (diminuendo to piano)
- Measure 32: *pp cresc. - ff sf sf sf sf sf sf sf f f f f f f* (pianissimo crescendo to fortissimo, then staccato fortissimo notes)
- Measure 41: *dimin. - p dolce* (diminuendo to piano dolce)
- Measure 45: *pp cresc.* (pianissimo crescendo)
- Measure 50: *ff p* (fortissimo then piano)
- Measure 56: *p* (piano)

Section markers A and B are indicated above the staff at measures 22 and 50 respectively.

Vivace $\text{♩} = 104$

Measures 63-75 of the first movement, *Vivace*. The tempo is marked $\text{♩} = 104$. The key signature remains A major. The score includes the following dynamics and markings:

- Measure 63: *sempre piano* (sempre piano)
- Measure 68: *cresc. - p* (crescendo to piano)
- Measure 75: *p* (piano)

82 *f* *p* *f* *sf* *f* *f* *f* *f* *ff*

91

99 *p cresc.*

106 *ff* *p* *2*

115 *cresc.* *f* *p* *cresc.* *f*

122 *4*

132 *dolce* *f* *11* *Fag. I* *Ob. I*

150 *cresc.* *ff* *pp*

157 *cresc.* *ff* *pp* *cresc.* *ff*

165 *sf* *sf* *sf*

171 *ff* *2* *G.P.* *ff* *2* *G.P.* *10*

191 Ob. I *pp* *cresc.*

201 *f* *ff*

212 *sf* *sf* *sf* *p*

222 *p*

231 *cresc.*

245

250 *f* *ff*

256

261

266 *più forte*

275 *ff*

282 *sf*

290 *sf* 1-5 2 3 4 5

297 *p* *p*

305 1 *p*

313 4 *p* *cresc.* - - - *ff* K

326 1 *p* *p* *cresc.* - - - *f*

333

340 1 *p* *dolce* *f*

348 L 2 *p* *pp* 1 *pp* 1 *pp*

358 *cresc.* 4 *cresc.* - - - *ff* *pp* *cresc.* - -

370 *ff* 1 *p cresc.* - - *ff* M *sf*

379 *sf* *sf* *ff*

386 2 G.P. *p* 1 G.P. *pp* 1 *sempre pp* 3

400 N 1-8 2 3 4 5 6 7 8 *pp* *sempre pp* *cresc.*

413 1-6 2 3 4 5 6

423 *ff*

432

439 *ff* *ff*

445

Allegretto ♩ = 76

26 A 24 B 16 Ob. I, II *cresc.*

C *ten.* *ff* *ten.*

74

85 2 *dimin.* *sempre dimin.*

97 D 3 6 Clar. I *p* *p*

117 **14** Ob. I, Clar. I *dolce* *dimin.* *p*

140 *cresc.* *f* *sf* *ff* *p dolce* **E**

152

161

169 *cresc.*

179 **F** **22** Vc. e B. Vle. *dimin.*

209 Ob. I, II *ten.* *p cresc.* *ff* **G**

216

222 **3** **6** Clar. I *p*

240 *dimin.* *pp* *ten.* *ff* **H** **2**

251 *ten.* *ff* **1** *p* *pp* **6** *pp* **14**

Presto $\text{♩} = 132$

f *p*

11 *cresc.* *sf* *sf* *f*

25 *p* *pp* 6

43 *ff* *p* *pp* 13 Ob. I

67 *p cresc.*

79 *f* *ff*

95 *p*

106 Viol. I *p* *cresc.* 8 *tr.* 1 1

123 *ff* *tr.*

133 *tr.* 3 *sf* *sf* *sf* *sf*

1. 2. **Assai meno presto** $\text{♩} = 84$

145 *ff* *ff* *p* 13 Viol. I Ob. I

166 *p* *p dolce* 4 3

183

195 *cresc. - - ff* 5

212 1 1 12

235 **Presto** Vc. e B. *f* *p*

245 *cresc. - - sf sf f*

259 *p* *sempre piano*

269

283 **B 3** *p* *pp* 1-5 2 3 4 5

297 6 *p* *p* *pp* 1-5 2 3 4 5 13

Ob. I

326 *p cresc. poco a poco*

336 *f*

351 *ff* *p*

362 *p*

380 *cresc.* *ff*

390 *sf*

402 *sf sf sf ff* *Assai meno presto* *p*

425 Ob. I *p*

Viol. I

6

8

1

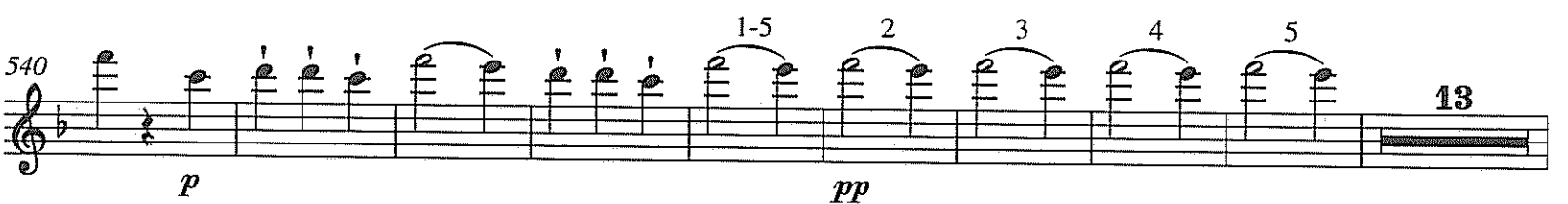
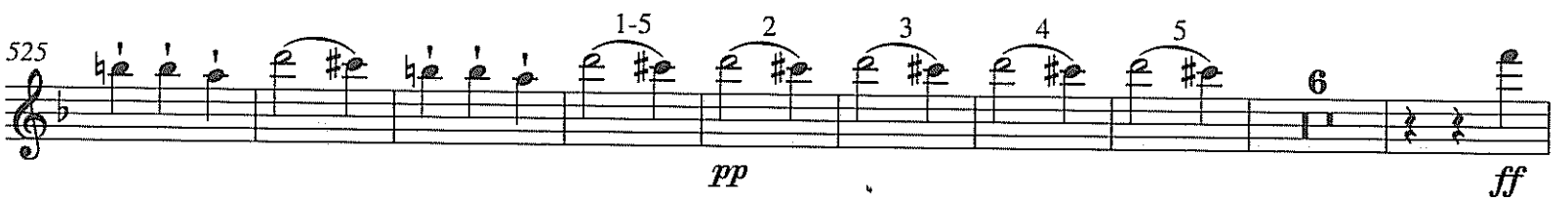
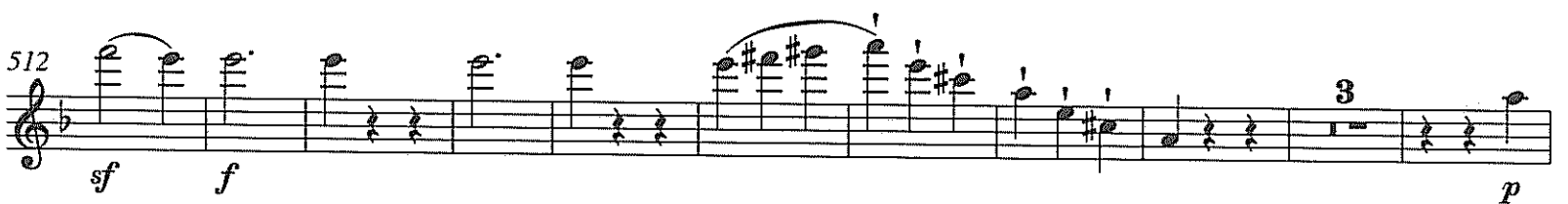
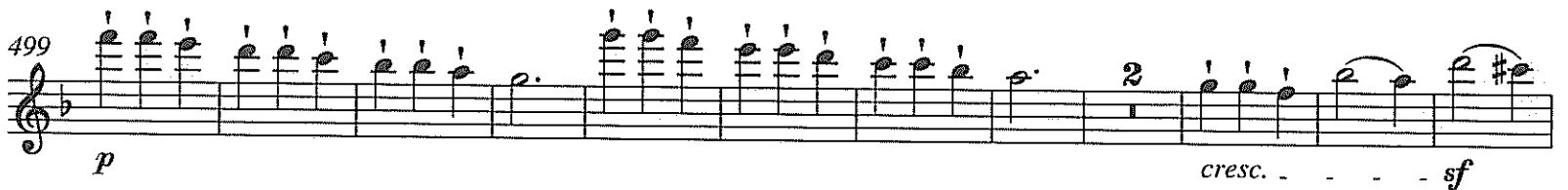
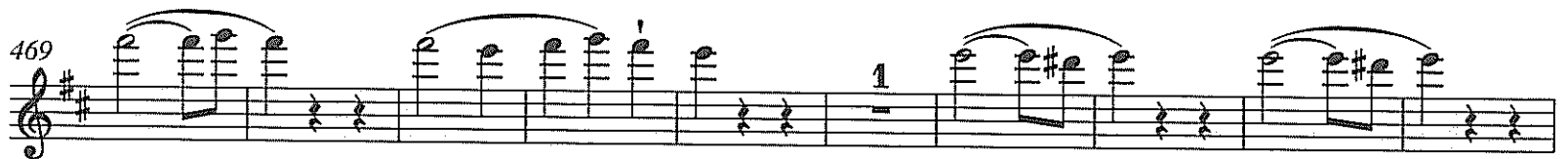
1

3

13

4

3



Ob. I

562 *p cresc.*

575 *f ff*

594 *p* Viol. I *tr.*

614 *p cresc. ff*

627 *tr. sf sf sf*

640 *sf ff* Coda *Assai meno presto* *Presto* *3* *ff*

Allegro con brio $\text{♩} = 72$

ff G.P. *ff* *sf* *sf* *sf*

8 *sf sf sf sf sf*

14 *sf sf sf sf sf*

21 *ff*

29 *ff* **A**

37 6 1-5

54 2 3 4 5 *f*

63 2 6 **B** *ten.* *p* *f* *p* *f* *f* *f* *p dolce*

80 *ten.* *f* *f* *f* *f* *p*

90 *cresc. poco a poco* 1-5 2 3

101 4 5 **C** *ff* *f* *f* *f* *f* *f* *f* *f* *sf*

115 *sf* *sf* *sf* *sf* *ff* 1.

123 *Dal Segno* *ff* 1. 2. *G.P.* *G.P.* *G.P.* *G.P.* *sf*

127 3 9 *sf* *sf* *sf* *sf* *sf*

146 **D** 1-7 2 3 4 5 6 7 1. *f sf sf sf sf sf sf sf sf*

153b 2. 1. *sf sf sf sf sf sf sf*

161b 2. *sf sf sf sf*

170 1 *sf sf*

181

192 **E** 1 Solo *dimin. pp*

202 *pp*

210 1 *cresc.*

218 **F** 1-7 2 3 4 1 *ff G.P. G.P. sf sf sf sf*

228 5 6 7 1. 2. *sf sf sf*

234 *ff*

242 *ff*

252

264 *sf*

274 *p sf p p f p f p f p* *ten.*

290 *p dolce f p f p f p f p p dolce*

303 *cresc. poco a poco*

313 *1-5 2 3 4 5 H ff sf sf sf sf ff f*

328 *f f f f f sf sf sf f f*

340 *G.P. G.P.*

349 *I 2 2 8*

366 1-5 2 3 4 5 1-5 2 3 4 5

380 1-7 2 3 4 5 6 7 *sempre più forte*

393 1-8 2 3 4 5 6 7 8 **K** *ff*

406 *sf*

413

419

426 *fff* *sf sf sf sf p cresc.* **L**

437 *fff*

446 *sf sf sf sf sf sf*

459 *ff sf sf sf ff*