

A-dur · A major  
op. 92

**Poco sostenuto**  = 69

BA 9007

Vivace  $\text{♩} = 104$ 

63  $\frac{2}{8}$

*p* *cresc.* - - - *p*

74 *f*  $\rightarrow$  *p* *f*

85 *sf* *sf* *sf* *sf* *sf* *ff*

93

101 *p* *cresc.* - - -

108 *ff* *p* *cresc.* - - *f* *p*

118 *cresc.* - - *f*

127 *p* *dolce* *f*

136 *p* *pp* *cresc.* *cresc.*

152 *ff* *pp* *cresc.* - - *ff*

162 *pp* *cresc.* - - *ff* *sf* *sf*

170 *sf* *ff* G.P. *ff* G.P.

**C** **D** **E**

184 *pp* *pp* *cresc.*

197 *f* *ff*

211 *sf* *sf* *sf* *p*

223 *p*

235 *cresc. poco a poco*

243

249 *f* *ff*

255

261

268 *più forte* *ff*

284 *sf* *sf*

292 *p*

300 *p*

314 *p* *cresc.* - - - *ff* *p* **K**

327 *p* *cresc.* - - - *f*

336 *p* *dolce*

345 *f* *p* *pp* **L** 2 6

360 *cresc.* *cresc. ff* *pp* *cresc. ff*

372 *p* *cresc. ff* *sf* *sf* **M**

381 *sf* *ff* **G.P.** *p*

390 **G.P.** *pp* *sempre pp* *pp* **N<sup>1-8</sup>** 2 3 4 5 6 7

408 *cresc.* 8 1-6

418 2 3 4 5 6 *ff*

427

436 *ff*

443 *ff*

Allegretto ♩ = 76

23 A 24 B 8

Viol. I

*f* — *pp*

64 *cresc.* — — — — — *ff*

76 *ten.*

86 *dimin.* — — — — — *sempre dimin.*

97 *ten.* *p* *p* *dolce* D

109

123 *cresc.* — — — — — *dimin.* 3 *p* *cresc.* 3

135 *dimin.* — — — *p* 2 3 *cresc.* — — — *f* 3 *sf*

145 3 E *ff* *p dolce* 3 3

158 3

168 3 3 3 3 3

177 F 22

3 *cresc.* — — — — — *dimin.* — — — — —

206 Vc. e B. Vle. *ten.* *pp* *cresc.* *ff* G

215

220 *ten.* *p* *dolce*

229 *dimin.*

242 *ten.* *pp* *ff* H 2 *ten.* *ff* 6

259 *pp* 6 *pp* 2 *ten.* *pp* 3 *f* *pp*

Presto ♩. = 132

f p 5

16 *sf* *f* 12 Viol. I

38 *pp* *ff* 8 Viol. I

57 *pp* *ff* 2 *p dolce*

71 *cresc.*

85 A *f* *ff*

98 *p* 2 7

118 *p* 1 1 1 *cresc.* *ff* *tr.* *tr.* *tr.*

131 *tr.* *tr.* *sf* *sf* *sf* 2

143 1. 2. *sf* *sf* *ff* *ff* *p dolce* *Assai meno presto*  $\text{♩} = 84$

154 1 *p* *p dolce* 1

168 1 *p dolce* 1

182

195 1 *cresc.* *ff*

209 1

222 1 12 *Vc. e B.* *Presto* *f* *p*

244 5 *sf* *f*

260 *p* *sempre piano*

271 5 *p* *B* 12

Viol. I

297 *pp* *p* 8

318 *p dolce* 2

334 *cresc. poco a poco* *f*

349 *ff* *p* C

362 *p* 2 7 1 1

382 *cresc.* *ff* 1 *tr.*

395 *sf* *sf* *sf* *sf* *sf* *ff* 2

409 *Assai meno presto* *p dolce* 1

422 *p* 1

437 *p dolce* 1

449 1

461 *cresc.* - - - - - *ff*

474 1 12 Vc. e B. *Presto*  
*f*

497 *p* 5

512 *sf* *f* 12 Viol. I

535 *pp* *ff* 8 Viol. I

553 *pp* *ff* *p dolce* 2

566 *cresc.* - - - - -

581 *f* *ff* D

595 *p* 2 7 1 *p* *p*

616 *cresc.* - - - - - *ff* *tr.*

628 *tr.* *sf* *sf* *sf* *sf* 2

640 *Coda* 3 *Assai meno presto* *Presto*  
*sf* *p dolce* *ff*

Allegro con brio  $\text{♩} = 72$ 

12 *ff* G.P. *sf* *sf* *sf* *sf* *sf* *sf* *sf*

20b *sf* *sf* *sf* *sf* *sf* *sf* *sf*

31 *ff* A *f* *p*

48 *f* *p*

60 *f* *p* *f* *p*

71 *f* *f* *f* *f* *p* *f* *f*

86 *f* *f* *p* *cresc. poco a poco* 1-5 2 3 4 5

103 C *ff* *f* *f* *f* *f* *f* *f* *f* *sf* *sf*

118 *sf* *sf* *sf* *ff* G.P. *ff* G.P. *sf* *sf* *sf*

125 *sf* *sf* *sf* *sf* *sf* *sf* *sf*

146 D *f* *sf* *sf* *sf* *sf* *sf* *sf* *sf* *sf*

155 *sf sf sf sf sf sf*

163 *sf sf sf sf*

173 *sf sf sf sf*

183

193 *dimin. pp* **E**

204 *pp*

216 *cresc. ff* **F** *G.P. G.P. sf sf sf sf*

228 *sf sf sf ff*

237 *ff*

248 **5** **2** **2**

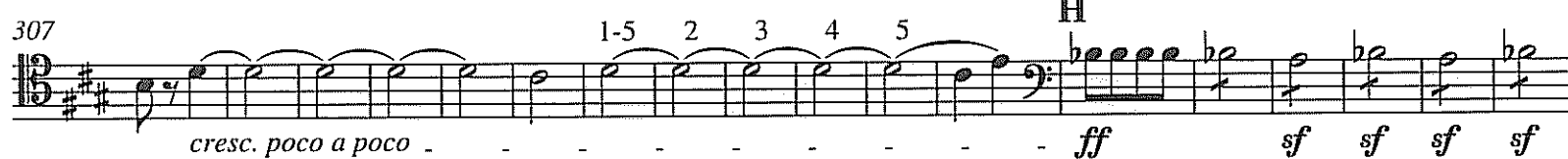
264

273 **G** *sf sf p f p f p f p* **3** **6** *ten.* **4**

294



307



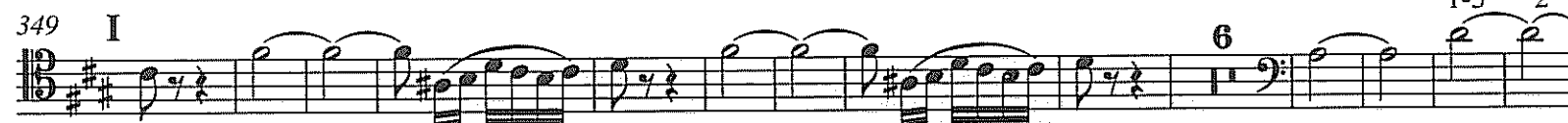
325



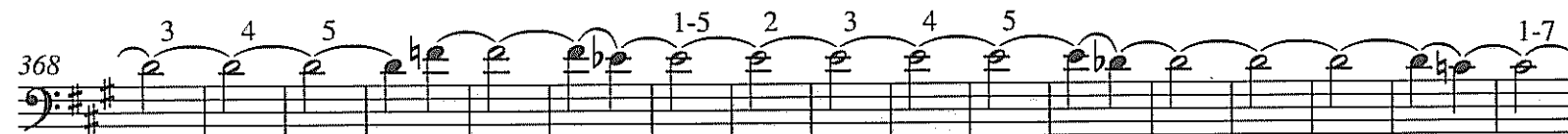
339



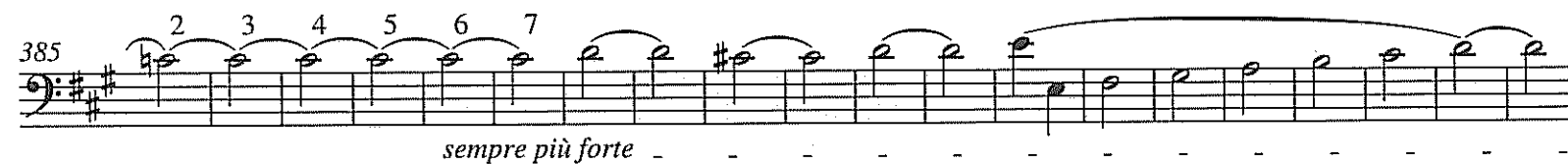
349



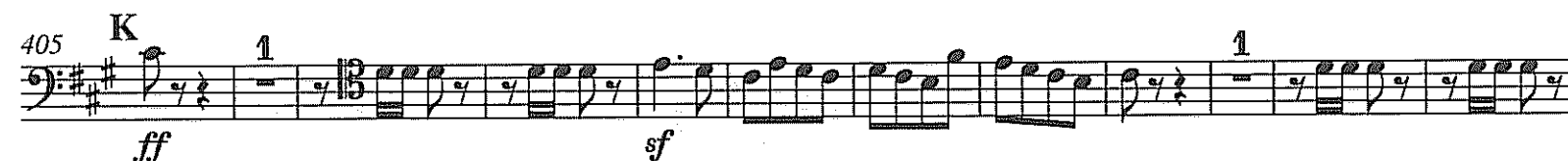
368



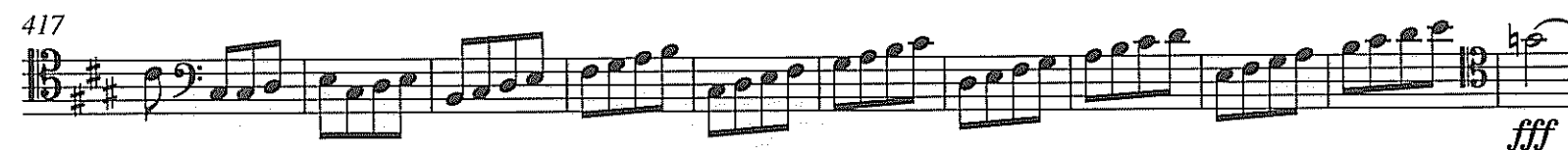
385



405



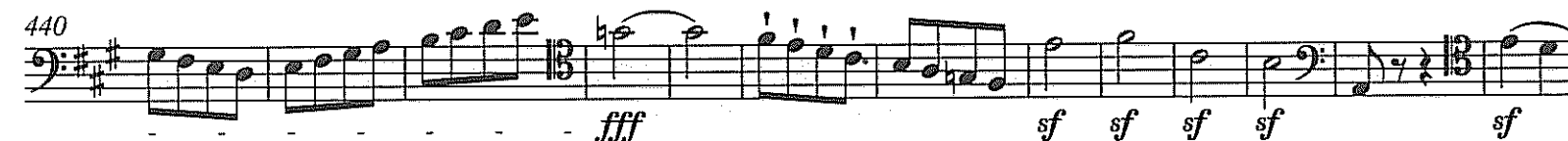
417



428



440



453

