

LUDWIG VAN BEETHOVEN

Symphonie Nr. 7 in A-dur
Symphony No. 7 in A major

op. 92

Urtext
Herausgegeben von / Edited by
Jonathan Del Mar

Clarinetto II



Bärenreiter Kassel · Basel · London · New York · Praha
BA 9007

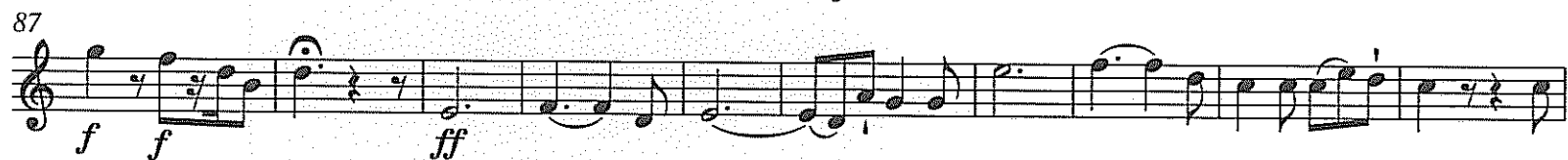
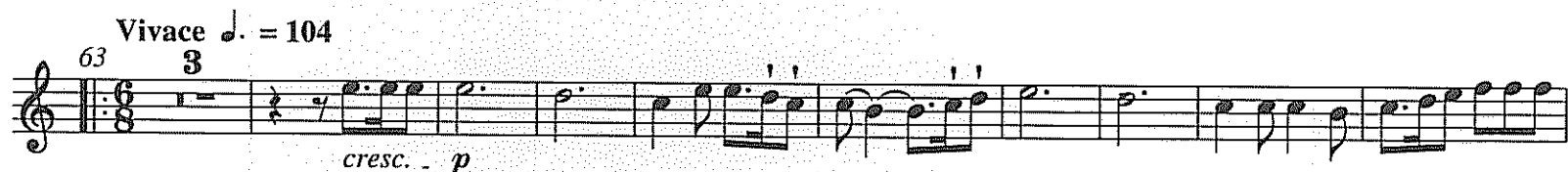
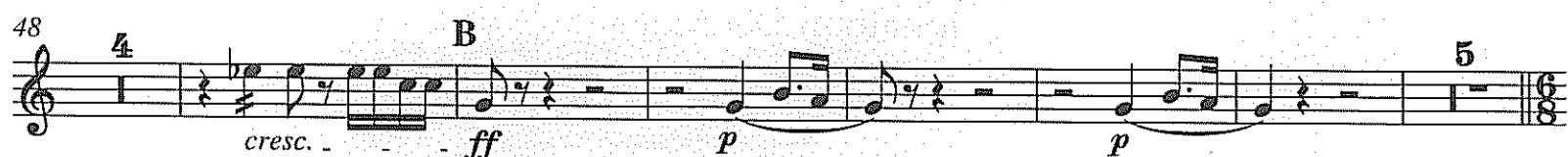
Clarinetto II in La/A

Symphonie Nr. 7

A-dur · A major
op. 92

Ludwig van Beethoven

Poco sostenuto $\text{♩} = 69$



124 *dolce*

133 *f* **D** 10 *Clar. I* 4 *ff* **E**

155 *ff* 2 *ff* *sf*

168 *sf* *sf* *ff* 2 **G.P.**

177 2 14 *Ob. I* *f* **F**

205 *ff*

215 **G** *sf* *sf* *sf* 4 *p*

227 5 1 1-5 2 *p* *cresc. poco a poco*

239 3 4 5

245 *f*

251 **H** *ff*

257 *ff*

262 6

274 *più forte* *ff* I

280

288 *sf* *sf*

296 16 Fl. I *p*

319 Ob. I K *cresc.* *ff* *p* 3 *cresc.*

331 *f*

340 2 *dolce* *f* L

349 8 Fl. I Ob. I Fag. I 1 *cresc.* *cresc. ff*

366 2 *ff* 2 *ff* M *sf*

378 *sf* *sf* *ff*

385 2 1 1 5 G.P. G.P. *pp* *sempre pp*

401 N 1-8 2 3 4 5 6 7 8

cresc.

415 1-6 2 3 4 5 6

ff

426

437

ff

443

ff

Allegretto ♩ = 76

23 A 24 B 16

Ob. I, II Fl. I

f pp

75 C ten.

ff

87

dimin. sempre dimin. p

99 ten. 1 D 2

p

ff

114 6 3

cresc. dimin. p cresc.

131 4 8 Vc. e B. E 33

ff

Clarinetto II

183 **F** 23 Vc. e B. Vle. Ob. I, II *ten.* *p cresc.*

214 **G** *ff*

219 *ten.* *p* 1 2

229 *dimin.*

242 *ten.* *pp* *ten.* *ff* **H** 2 *ten.* *ff* 4

257 *ten.* *pp* 6 *pp* 4 *ten.* *pp* 3 *f* *pp*

Presto $\text{♩} = 132$

9 Fl. I *8va* Fag. I, II *f* *p* *f*

19 *p* 3

32 1-5 2 3 4 5 6 36 Ob. I *pp* *ff*

83 *f* *ff* **A**

95 Viol. I *tr* 16 *p* 1

121 *cresc.* *ff* 1 1 1 1 1 1 1

134

3 1-5 2 3 4 1. 5 2

145b 2. 5 3 Assai meno presto $\text{♩} = 84$

p dolce

159

1

p

170

1

p dolce

182

194

1

cresc.

205

ff

216

1 12 Vc. e B.

Presto

237

f *p* *f*

Fl. I 8va

Fag. I, II

255

p *sempre piano*

273

Fl. I 8va

Fag. I, II

p *p*

B 3

289

1-5 2 3 4 5 6 36

pp *p*

341 Ob. I *f* *ff* *C*

353 *Viol. I* 16 *tr*

378 *p* *cresc.* *ff*

391 1 1 3 1-5 2 3

404 4 5 3 *Assai meno presto* *p dolce*

415 1 1

425 *p* 1

435 1 *p dolce*

447

459

1

cresc. - - - - - *ff*

470

1

481

1 12

Vc. e B.

Presto

f *p* 9

509

Fl. I
8va

Fag. I, II

f

521

3

p

1-5 2 3 4 5 6

pp

539

36

Ob. I

ff *f*

585

D

ff

16

Viol. I

613

tr

p

cresc. - - - - - *ff*

625

1 1 1 3 1-5 2

639

3 4 5 3

Coda

Assai meno presto

p dolce

Presto 3

ff

Allegro con brio $\text{♩} = 72$

12 1. 2. *sf sf sf sf sf sf sf*

20b 2. *ff*

30 *ff* A 8

48

59 3 7 B *ten.* *f f f f f*

78 1 *p* 1 *ten.* *f f f f* 1 *p*

92 1-5 2 3 4 5 C *cresc. poco a poco* *ff f f f*

109 1. *f f f f f sf sf sf sf sf ff*

122 Dal Segno Segno 2. 1 1 1 1 *G.P. G.P. ff G.P. G.P. sf sf*

128 3 9 D *sf sf sf sf f sf sf*

148 *sf sf sf sf sf sf* 1. 2.

154b *sf sf sf sf sf sf sf* 1.

161b 2. 5

173 *sf sf sf sf*

183 1-5

193 2 3 4 5 E 11 Clar. I 1
dimin.

212 F 1 1
cresc. ff G.P. G.P.

224 1. 2. *sf sf sf sf sf sf sf*

233 *ff*

243 4 2 *ff*

260 2

271 G 3 7 1. ten. 4
sf sf p f p f p f p f p

294 *p dolce* *f* *p* *f* *p* *f* *p* *f* *p* *p dolce* 2

306 *cresc. poco a poco* 1-5 2 3 4 5 H *ff*

320 *sf* *sf* *sf* *sf* *ff* *f* *f* *f* *f* *f* *f* *sf*

334 *sf* *sf* *f* *f* 1 G.P. 1 G.P.

346 I 2 2

360 1-5 2 3 4 5 16 Viol. I

390 *sempre più forte*

405 K *ff* *sf*

414

425 *fff* *sf* *sf* *sf* *sf* *p* *cresc.* L

439 *fff* *sf* *sf* *sf* *sf* *sf*

454 *sf* *ff* *sf* *sf* *sf* *ff*