

Concerto [Seibel 213]

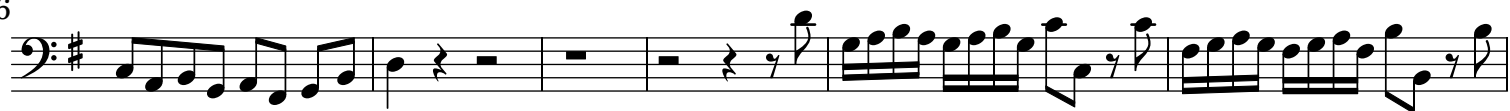
Basso

J. D. Heinichen (1683-1729)

[1. Allegro]



6



12



20



27



33



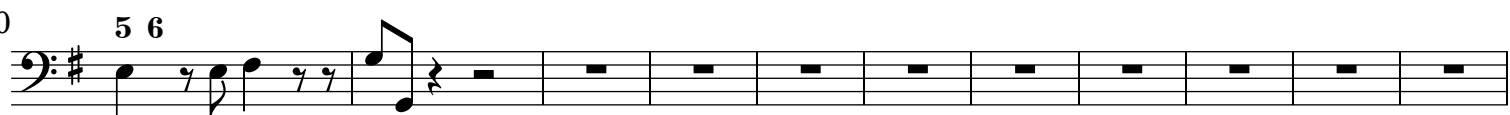
39



44



50



61



67



73



[2.] Larghetto

Measures 1-44 of the Bassoon part. The key signature is one sharp (F#), and the time signature is 3/4. The tempo is Larghetto. The notation includes various eighth and sixteenth notes, rests, and a final fermata.

[3.] All[egr]o

Measures 45-46 of the Bassoon part. The key signature is one sharp (F#), and the time signature is common time (C). The tempo is All[egr]o. The notation includes various eighth and sixteenth notes, rests, and a final fermata. The score includes dynamic markings and articulation symbols.

Bassoni Soli

Cembalo

Bassoni Soli

Cembalo

[4.] Entrée

5

13

18

This section contains the first three staves of the 'Entrée' movement. The first staff (measures 1-4) begins with a treble clef, a key signature of one sharp (F#), and a 2/4 time signature. The second staff (measures 5-8) continues the melody. The third staff (measures 9-12) features a repeat sign and more complex rhythmic patterns. The fourth staff (measures 13-16) continues the development. The fifth staff (measures 17-18) concludes the section with a double bar line and repeat dots.

[5.] Loure

5

14

19

This section contains the next three staves of the 'Loure' movement. The first staff (measures 1-4) starts with a treble clef, a key signature of one sharp (F#), and a 6/4 time signature. The second staff (measures 5-8) continues the melody. The third staff (measures 9-12) features a repeat sign and more complex rhythmic patterns. The fourth staff (measures 13-16) continues the development. The fifth staff (measures 17-19) concludes the section with a double bar line and repeat dots.

[6.] Tempo di Menuet. Trio alternativ avec l'Air Italienne tacet

[7.] Air Italienne all[egr]o

8

22

30

This section contains the next three staves of the 'Air Italienne' movement. The first staff (measures 1-4) begins with a treble clef, a key signature of one sharp (F#), and a 2/4 time signature. The second staff (measures 5-8) continues the melody. The third staff (measures 9-12) features a repeat sign and more complex rhythmic patterns. The fourth staff (measures 13-16) continues the development. The fifth staff (measures 17-20) continues the development. The sixth staff (measures 21-24) continues the development. The seventh staff (measures 25-28) continues the development. The eighth staff (measures 29-30) concludes the section with a double bar line and repeat dots.